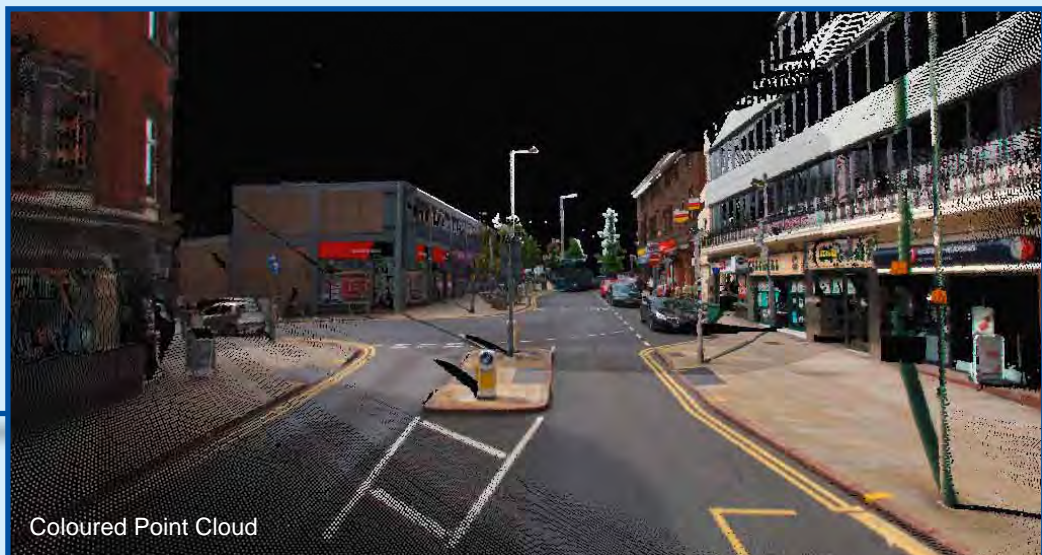


## StreetMapper IV



### Next Generation Mobile Mapping

*StreetMapper IV* is designed for the rapid mapping of highways, infrastructure and buildings. Using the very latest laser scanning technology, precision navigation and advanced data processing coupled with innovative system design, *StreetMapper IV* delivers proven accuracies in the most challenging environments.



Coloured Point Cloud



## PERFORMANCE

Performance*	Compact MEMS**	Compact MEMS Plus	Compact FOG-I*	Compact FOG-II*	Compact FOG-III
Position [m]	0.02	0.02	0.02	0.02	0.02
Velocity [m/s]	0.005	0.005	0.005	0.005	0.005
Roll / Pitch [deg]	0.015	0.01	0.008	0.004	0.003
True heading [deg]	0.03	0.02	0.015	0.01	0.007
Gyro-Bias [deg / h]	1	1	0.03	0.03	0.03
Gyro-RW (Random Walk) [deg / sqrt(h)]	0.07	0.07	0.005	0.005	0.005
Accelerometer Bias [mg]	0.1	0.1	0.3	0.3	0.3
Data rate	up to 400 Hz	up to 600 Hz	up to 256 Hz	up to 256 Hz	up to 600 Hz



Coloured Point cloud

## PERFORMANCE, after 60 sec GNSS outage

Performance*	Compact MEMS**	Compact MEMS Plus	Compact FOG-I*	Compact FOG-II*	Compact FOG-III
Position [m]	0.3	0.15	0.1	0.06	0.06
Roll / Pitch [deg]	0.018	0.012	0.008	0.004	0.003
True heading [deg]	0.03	0.02	0.015	0.01	0.007

\* Post Processing \*\* Upgrades to higher accuracy possible at any time

More info  
in the web



## 3D Laser Mapping Ltd.

Ranch House  
1 Chapel Lane  
Bingham, Nottingham, UK  
NG13 8GF  
P: +44 (0) 1949 838 004  
F: +44 (0) 870 121 4605  
E: info@3dlasermapping.com  
W: www.3dlasermapping.com

PERFORMANCE	Laser Scanner
Eye Safety Class	Laser Class 1
Max range @ target reflectivity 80%	400 m
Max range @ target reflectivity 10%	150 m
Minimum Range	1.2 m
Accuracy	5 mm
Precision	3 mm
Max. Measurements Rate	1,000,000 meas./sec
Max Scan Speed	250 scans/sec
Field of View (FOV)	355°

PERFORMANCE	Panoramic Camera
Resolution	30 MP (5 MP x 6 sensors)
Max Frame per sec	10 jpeg compression
Field of View	360°

StreetMapper is the result of a joint venture between guidance and navigation specialist IGI and 3D Laser Mapping.

## IGI mbH

Langenauer Str. 46  
57223 Kreuztal  
Germany  
P: +49 (0) 2732 5525-0  
F: +49 (0) 2732 5525-25  
E: info@igi-systems.com  
W: www.igi-systems.com