
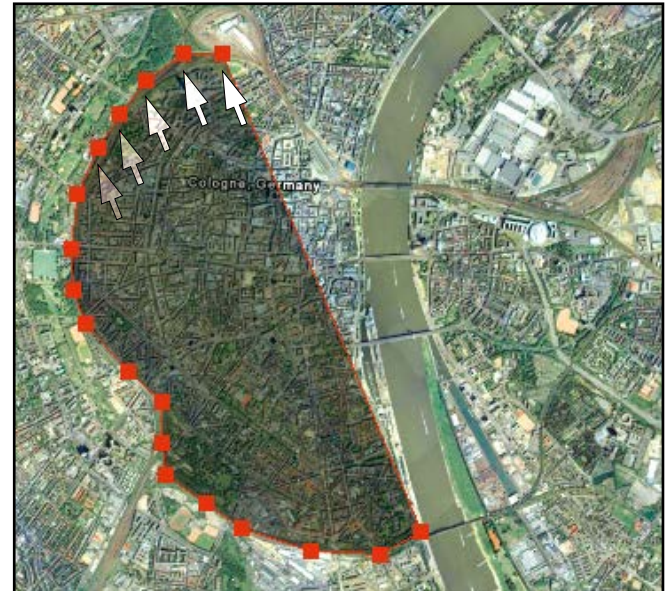


IGIplan™

State-of-the-art Mission Planning Software


 IGIplan is an advanced mission planning software. It supports over 600 local coordinate systems and all aerial cameras and sensors and is prepared for every kind of mission. Working together with the CCNS, flight missions can be planned and flown in one connected workflow. The intuitive graphical user interface and its real time computation of flight lines help the operator in his day-to-day business. As a special feature, IGIplan includes GoogleEarth™ format support to show end-customers results in their familiar environment.



Picture 1: Defining an area - Cologne city

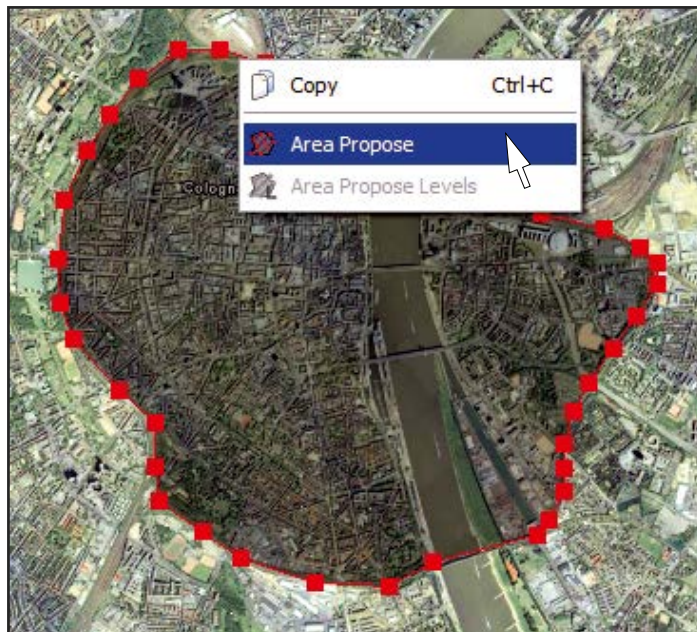
Example - Area Propose:

Plan your mission within a few minutes and only by two simple steps.

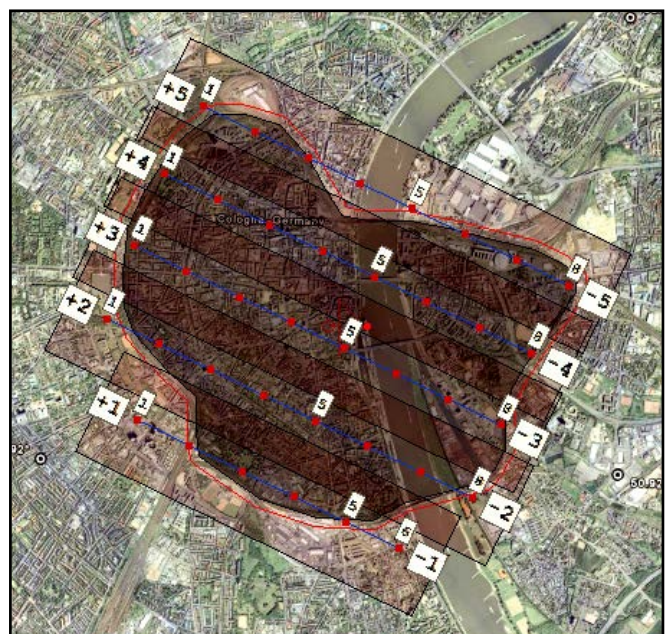
Step 1: Define a polygon by selecting an area with the mouse.

Step 2: Choose Area Propose from the popup menu.

The flightlines are calculated automatically, and the resulting mission plan is shown.



Picture 2: Selecting Area Propose



Picture 3: Automatically generated flightlines

Features:

- More than 600 local coordinate systems
- Support for all common aerial cameras and sensors
- Raster & vector map support for common file formats
- Support for many DTM raster formats
- Integrated world-wide DTM
- Drag and modify flight lines interactively
- Automatic altitude determination through sensor specific mission planning parameters (GSD, picture scale)
- Planning and creation of flight lines, blocks or tracks with automatic levels using DTM
- Import of self-defined WMS servers
- Full support for IGI's CCNS
- 3D view of the flight plan
- GoogleEarth (*.kml) format support
- Multiple Undo / Redo
- Video tutorials

IGIplan™ - Mission Planning Software

IGIplan Sensor Type Support

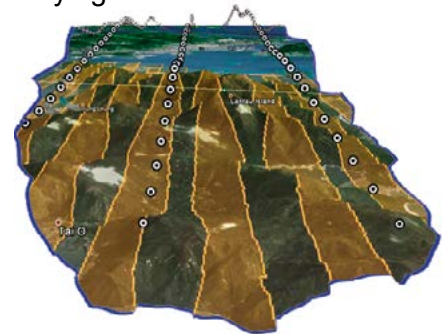
| | | Automatic Altitude Determination & Coverage Simulation when changing: |
|-----------------|--|---|
| Analog Cameras | e.g. RC10/20/30, RMK-A, RMK-TOP, LMK, ... | Picture scale, forward size, sideways size |
| Digital Cameras | e.g. complete DMC, UltraCam, Digi-CAM, and PhaseOne camera series... | Ground Sample Distance (GSD) and analog camera features |
| LiDAR Scanner | e.g. LiteMapper series | pts/sqm and speed, swath |
| Line Scanner | e.g. JAS, 3-DAS-1, ... | GSD, swath |

System requirements:

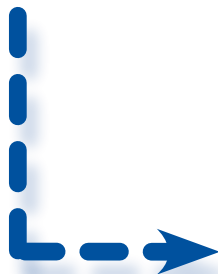
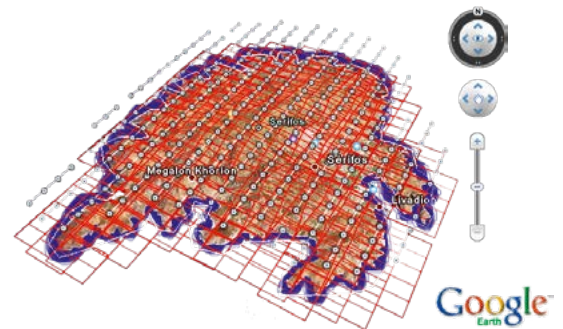
Intel Pentium®, Core™ or equivalent processor
 Microsoft® Windows 7, 8.1 or 10
 512 MB of RAM
 3D Nvidia graphic card recommended
 150 MB of available hard disk space

Terrain Following:

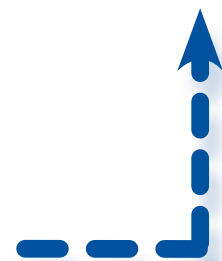
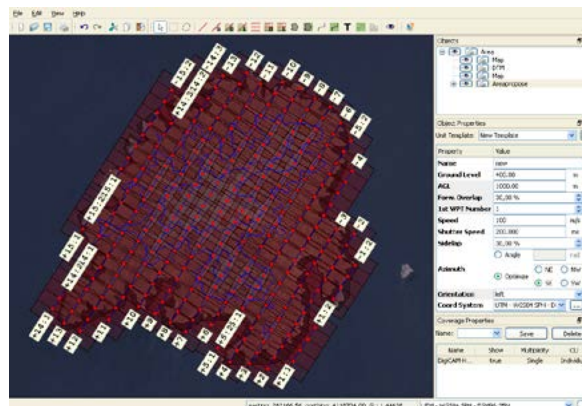
- Good overlap in the whole area
- Minimal flying effort



Keyhole Markup Language support:



Import polygon from
 GoogleEarth to IGIplan.



Export resulting flight-plan from IGIplan to
 GoogleEarth.

+49 (0)2732 5525-0 info@igi-systems.com

+49 (0)2732 5525-25 www.igi-systems.com

IGI mbH
 Langenauer Str. 46
 57223 Kreuztal
 Germany