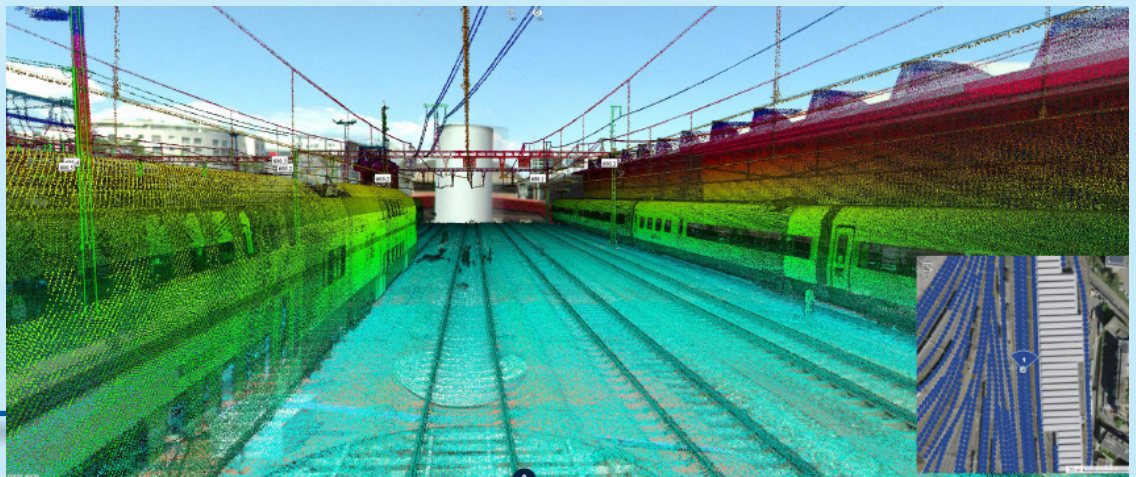


StreetMapper V



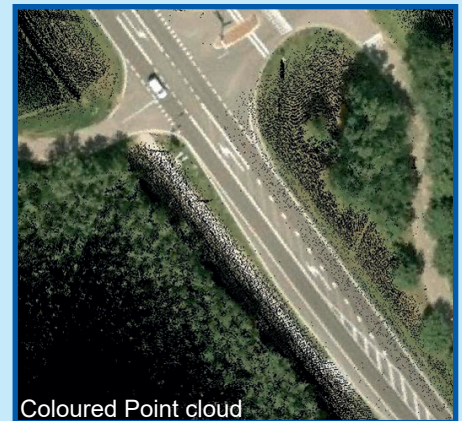
Next Generation Mobile Mapping

StreetMapper V is designed for the rapid mapping of highways, infrastructure and buildings. Using the very latest laser scanning technology, precision navigation and advanced data processing coupled with innovative system design, *StreetMapper V* delivers proven accuracies in the most challenging environments.





PERFORMANCE					
Performance*	Compact MEMS**	Compact MEMS Plus	Compact FOG-I**	Compact FOG-II**	Compact FOG-III
Position [m]	0.02	0.02	0.02	0.02	0.02
Velocity [m/s]	0.005	0.005	0.005	0.005	0.005
Roll / Pitch [deg]	0.015	0.01	0.008	0.004	0.0025
True heading [deg]	0.03	0.02	0.015	0.01	0.005
Gyro-Bias [deg / h]	1	1	0.03	0.03	0.03
Gyro-RW (Random Walk) [deg / sqrt(h)]	0.07	0.07	0.005	0.005	0.005
Accelerometer Bias [mg]	0.1	0.1	0.3	0.3	0.3
Data rate	up to 400 Hz	up to 600 Hz	up to 256 Hz	up to 256 Hz	up to 600 Hz



Coloured Point cloud

PERFORMANCE, after 60 sec GNSS outage					
Performance*	Compact MEMS**	Compact MEMS Plus	Compact FOG-I**	Compact FOG-II**	Compact FOG-III
Position [m]	0.3	0.15	0.1	0.06	0.06
Roll / Pitch [deg]	0.018	0.012	0.008	0.004	0.003
True heading [deg]	0.03	0.02	0.015	0.01	0.005

More info in the web

* Post Processing ** Upgrades to higher accuracy possible at any time

PERFORMANCE	Laser Scanner
Eye Safety Class	Laser Class 1
Max range @ target reflectivity 80%	420 m
Max range @ target reflectivity 10%	150 m
Minimum Range	1.2 m
Accuracy	5 mm
Precision	3 mm
Max. Measurements Rate	1,000,000 meas./sec
Max Scan Speed	250 scans/sec
Field of View (FOV)	360° "full circle"

PERFORMANCE	Panoramic Camera
Resolution	30 MP (5 MP x 6 sensors)
Max Frame per sec	10 jpeg compression
Field of View	360°

IGI mbH

Langenauer Str. 46
57223 Kreuztal
Germany
P: +49 (0) 2732 5525-0
F: +49 (0) 2732 5525-25
E: info@igi-systems.com
W: www.igi-systems.com